



**2024–2025 Fulbright Teachers
for Global Classrooms Participant**



**“If you’re going to live, leave behind a
legacy. Make an impact on the world
that can never be erased.”**

–Maya Angelou

**HOLLY KOLAROVA, EC/ ESL TEACHER
CLEAR CREEK ELEMENTARY
HENDERSON COUNTY SCHOOLS
NORTH CAROLINA, USA**

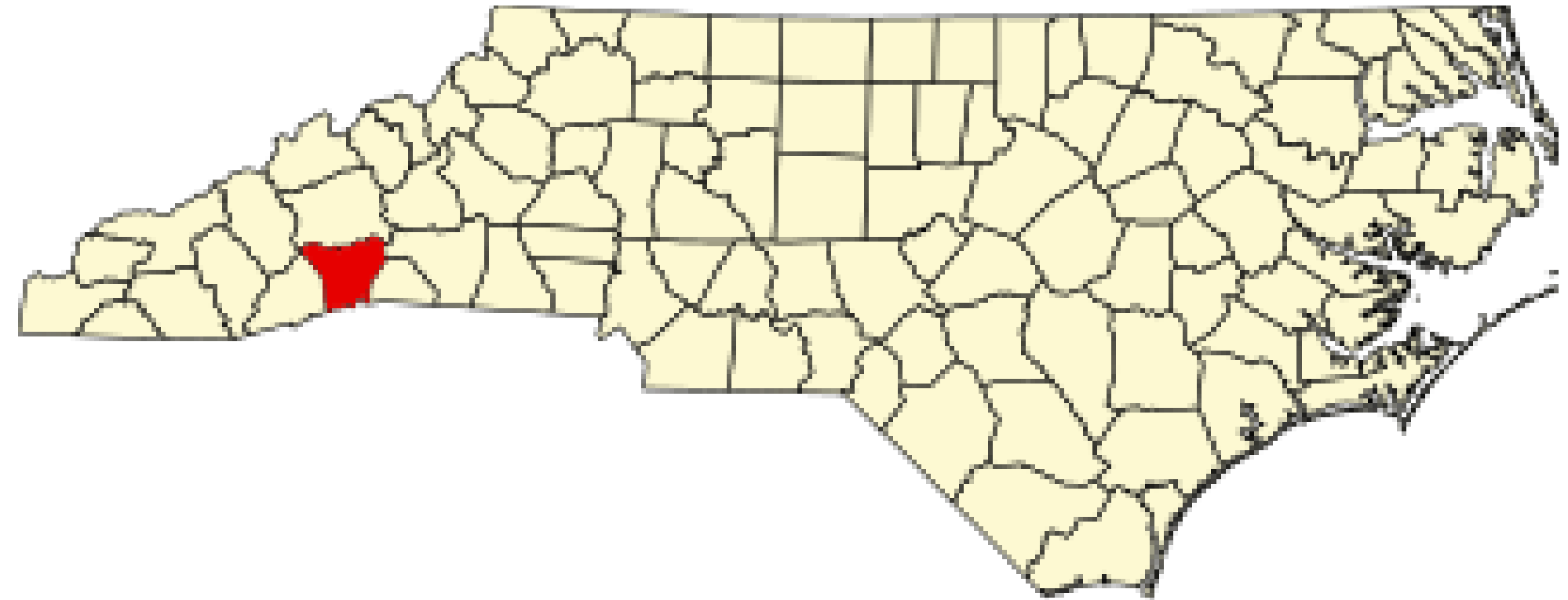


828–329–5710

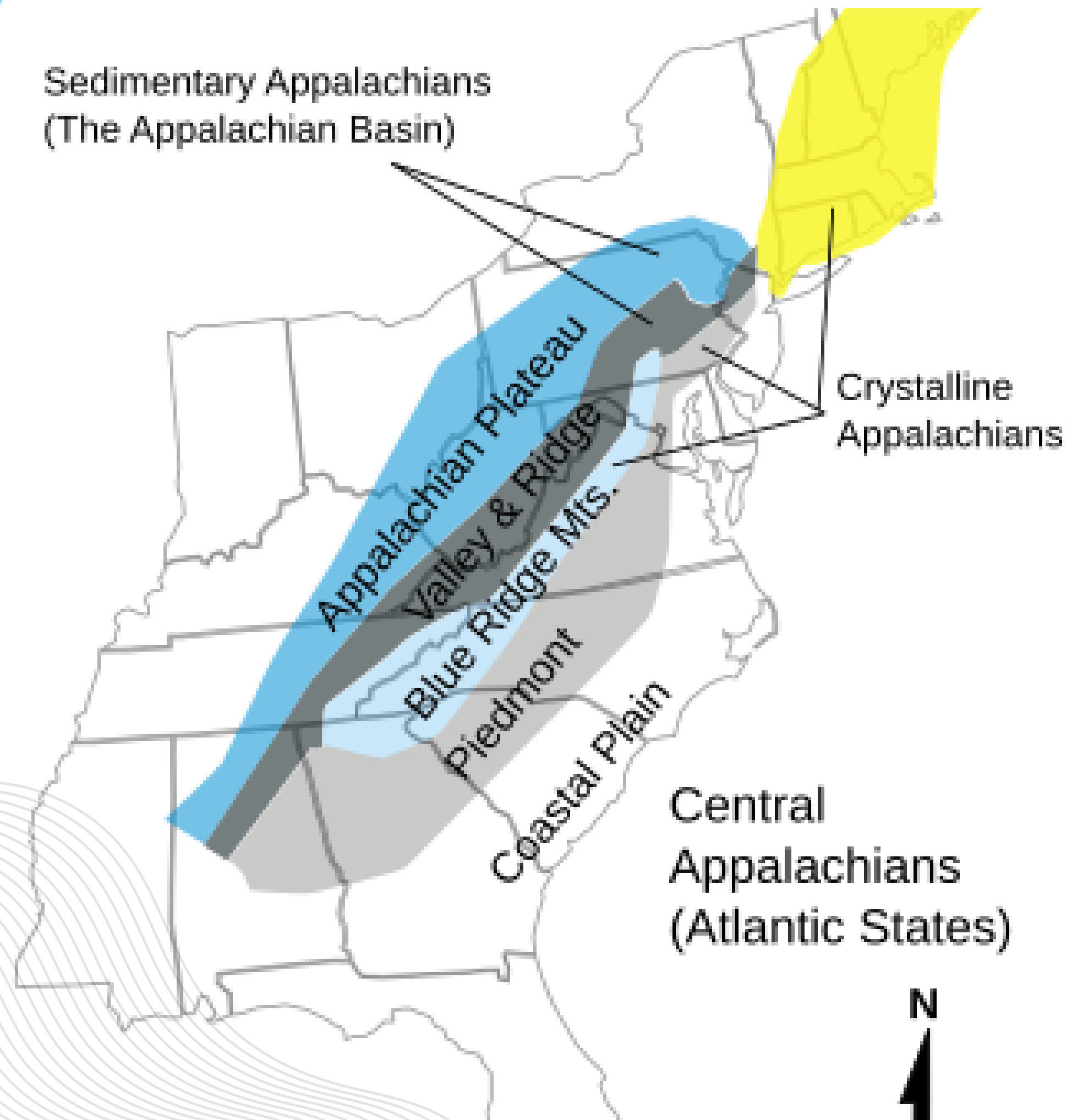


hkolarova@hcpsnc.org or hjkolaro@live.com

Clear Creek Elementary



Sedimentary Appalachians
(The Appalachian Basin)



Crystalline
Appalachians

Central
Appalachians
(Atlantic States)





- Clear Creek Elementary is a public school located in Hendersonville, NC, which is in a large suburb setting.
- The student population of Clear Creek Elementary is 484 and the school serves PK-5.
- The school's minority student enrollment is 44%.
- Student-teacher ratio is 15:1, which is the same as that of the district.
- Student population is made up of 53% female students and 47% male students.
- The school enrolls 70% economically disadvantaged students.
- There are 33 equivalent full-time teachers and 1 full-time school counselor.



Website: <https://www.hendersoncountypublicschoolsnc.org/ccs/>

A Day in the Life of an Elementary Student

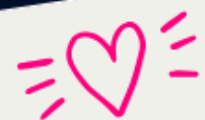


CLEAR CREEK ELEMENTARY
HENDERSONVILLE, NC
MASCOT: CUB

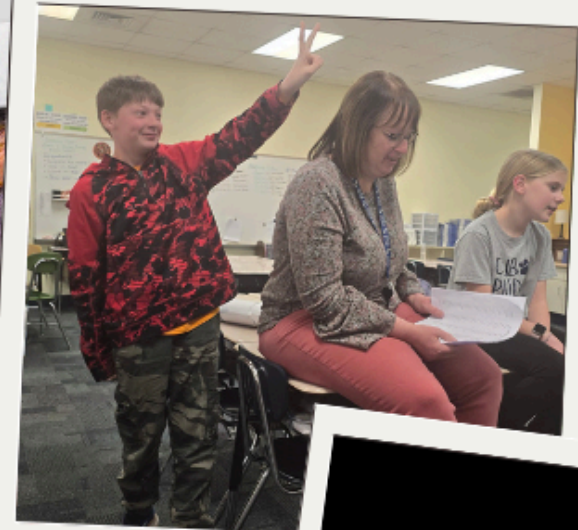


Clear Creek
Garden Club 24-25





SPELLING BEE TEAM 2024-25



Raleigh, the State Capitol

Raleigh is the capital city of North Carolina. It's known for its universities, including North Carolina State University. The number of technology and scholarly institutions around Raleigh, Chapel Hill and Durham make the area known as the Research Triangle. The North Carolina State Capitol is a 19th-century Greek Revival-style building with a statue of George Washington dressed as a Roman general in its rotunda.



Cherokee Indians

The Eastern Band of Cherokee Indians (EBCI) is a federally recognized tribe located in Western North Carolina, specifically on the Qualla Boundary, a 56,600-acre reservation. This tribe is unique in North Carolina, being the only federally recognized Native American tribe in the state. They are descendants of those who remained in the East after the forced removal of most of the Cherokee people during the Trail of Tears.



Biltmore House

Biltmore Estate is a historic house museum and tourist attraction in Asheville, NC. The main residence, Biltmore House, is a Châteauesque-style mansion built for George Washington Vanderbilt II between 1889 and 1895 and is the largest privately owned house in the United States. Still owned by George Vanderbilt's descendants, it remains one of the most prominent examples of Gilded Age mansions.



NASCAR Autoracing Charlotte, NC

NASCAR, the National Association for Stock Car Auto Racing, is a major American auto racing organization known for its stock car racing series



Outer Banks, Coast

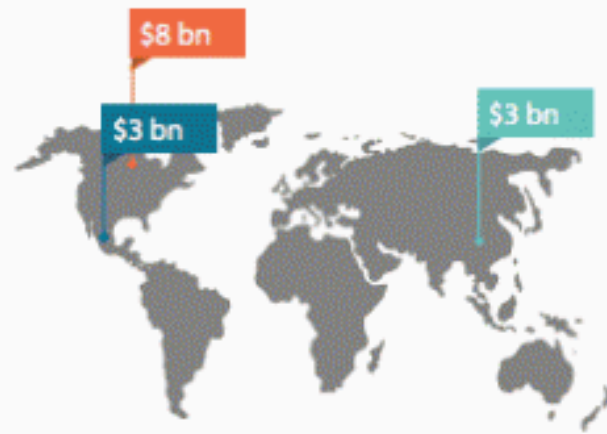
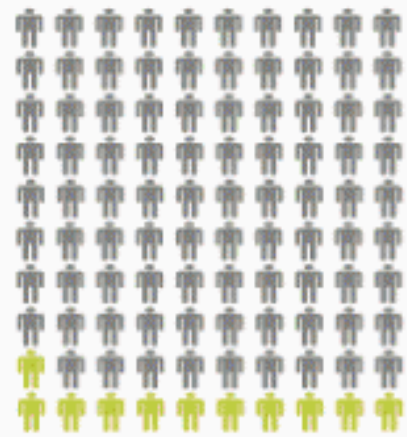
The Outer Banks are barrier islands off the coast of the U.S. state of North Carolina, separating the Atlantic Ocean from the mainland. Their open-sea beaches, state parks and shipwreck diving sites make them a popular holiday destination. Roanoke Island was the site of England's first settlement in the New World, an endeavor sponsored by Sir Walter Raleigh.



Global North Carolina

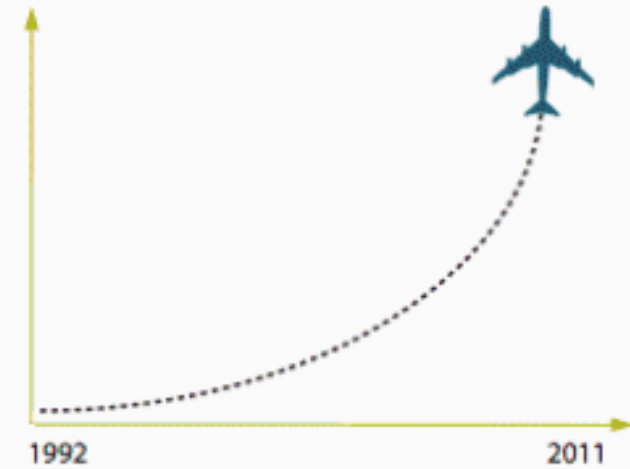
How global is North Carolina?

Changing demographics and economic opportunities show we're more global than ever.



11% speak a language other than English at home
The foreign-born population is more than 1.6 times larger than it was in 2000.

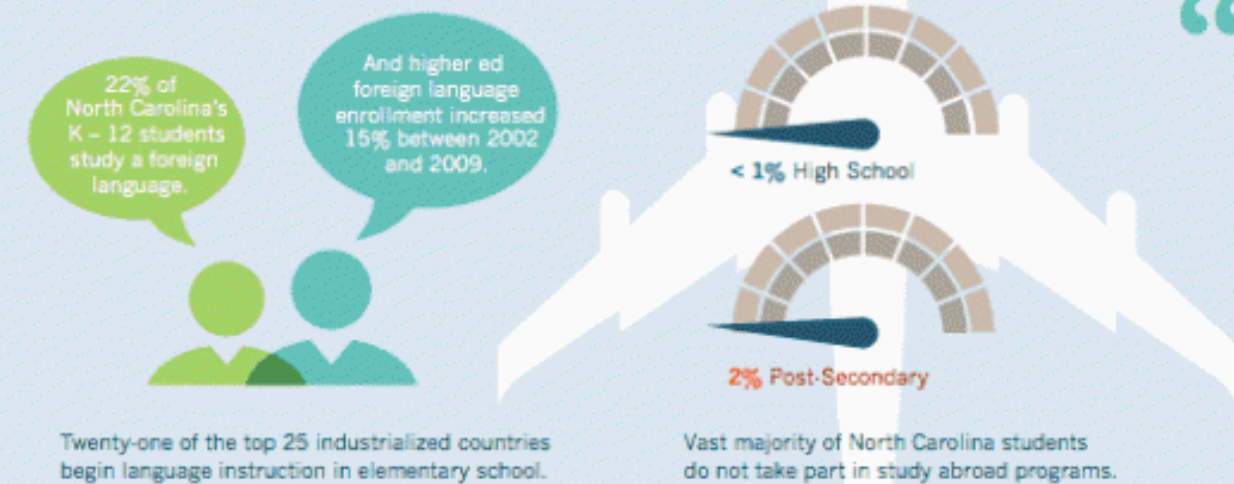
#12 ranking among U.S. states in exports of services
Canada, China, and Mexico are our top export markets.



162% increase in jobs tied to international trade
One out of every five jobs in the state is now related to international trade.

How are we preparing students?

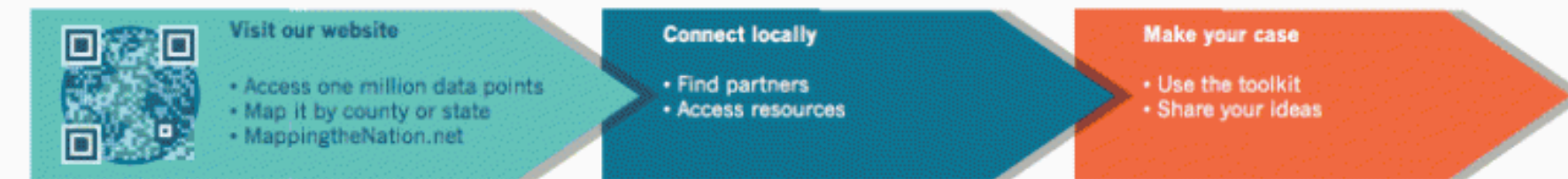
Schools can not yet meet community needs and workforce demands.



“If we didn't know that we had this great need before September 11, we know it now. Our children are growing up in a whole new world, and if we care about them and their future, we have a responsibility to see that they understand that world.”

— James B. Hunt Jr.
Former Governor of North Carolina

How do we plan for the future?



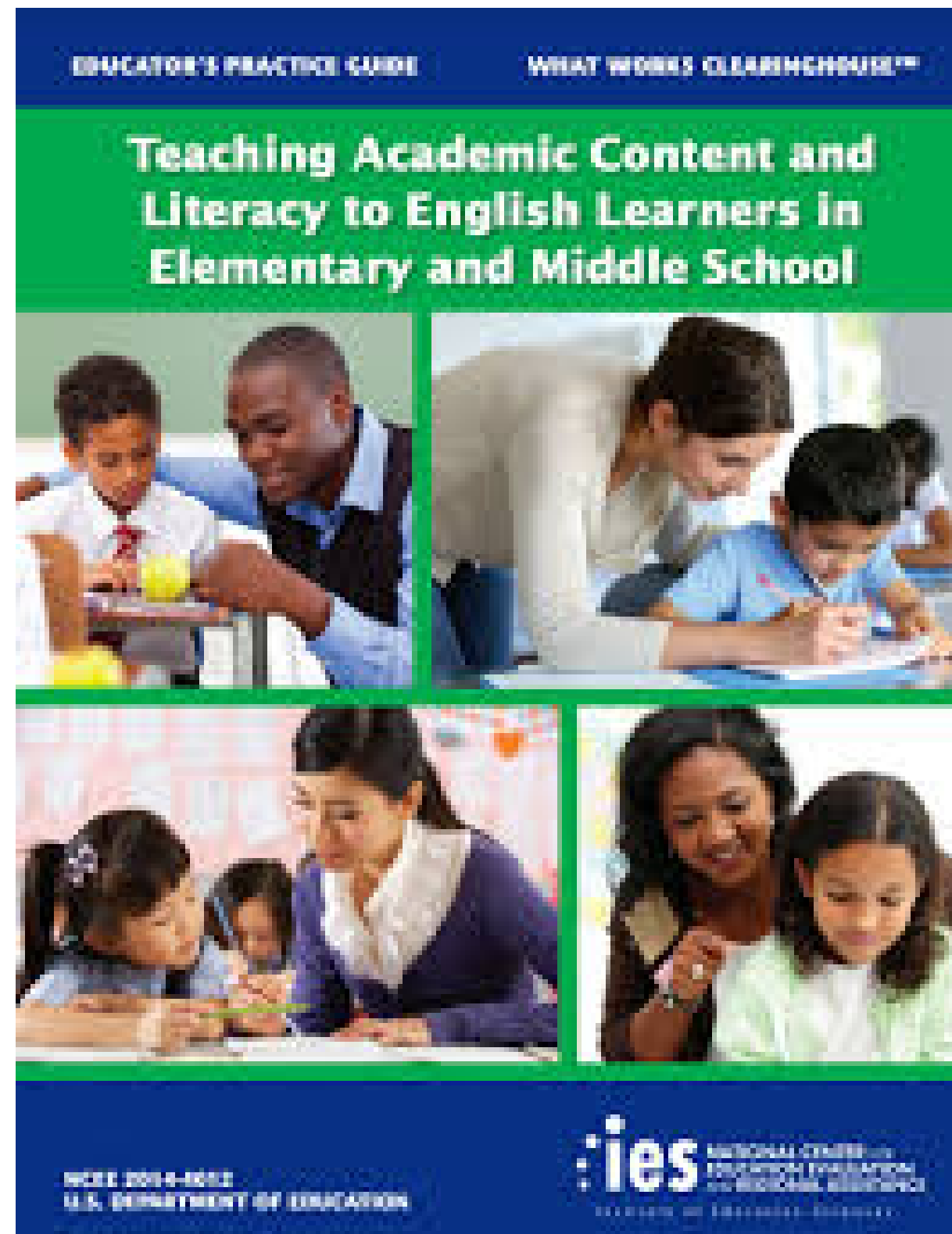
MAPPING THE NATION:
LINKING LOCAL TO GLOBAL
a project from

Asia
Society
Partnership for
Global Learning

LONGVIEW
FOUNDATION

ssas

<https://asiasociety.org/mapping-nation/north-carolina>



https://ies.ed.gov/ncee/wwc/Documents/PracticeGuide/english_learners_pg_040114.pdf text

Language Transfers:

The Interaction Between English and Students' Primary Languages

Dr. Jana Echevarria
California State University, Long Beach

Dr. Donald Bear
University of Nevada, Reno



It is important for teachers to understand why English Language Learners (ELLs) use alternative pronunciations for some English words. Many English sounds do not exist or transfer to other languages, so English Language Learners may lack the auditory acuity to “hear” these English sounds and have difficulty pronouncing them. These students are not accustomed to positioning their mouth in a way the sound requires. The charts that appear on the following pages show that there is variation among languages, with some languages having more sounds in common and thus greater transfer to English than others.

For example, an English speaker may be able to pronounce the /r/ in the Spanish word *pero* (“but”), but not the /rr/ trill in *perro* (“dog”). The English speaker may also lack the auditory acuity to detect and the ability to replicate the tonal sounds of some Chinese words. Similarly, a Vietnamese speaker may have difficulty pronouncing /th/ in words such as *thin* or *thanks*.

Further, English Language Learners make grammatical errors due to interference from their native languages. In Spanish, the adjective follows the noun, so often English Language Learners say “the girl pretty” instead of “the pretty girl.” While English changes the verb form with a change of subject (*I walk. She walks.*), some Asian languages keep the verb form constant across subjects. Adding /s/ to the third person may be difficult for some English Language Learners. Students may know the grammatical rule, but

Language Transfers

<http://drive.google.com/file/d/1facFPivCysp2h8qjybBzWqj9CjUwRJaB/view?usp=sharing> text